



MONTHLY MEMBERSHIP PROGRESS REPORT

District A 5

Results as of: 04/30/2019

GMT: CHRIS LEWIS

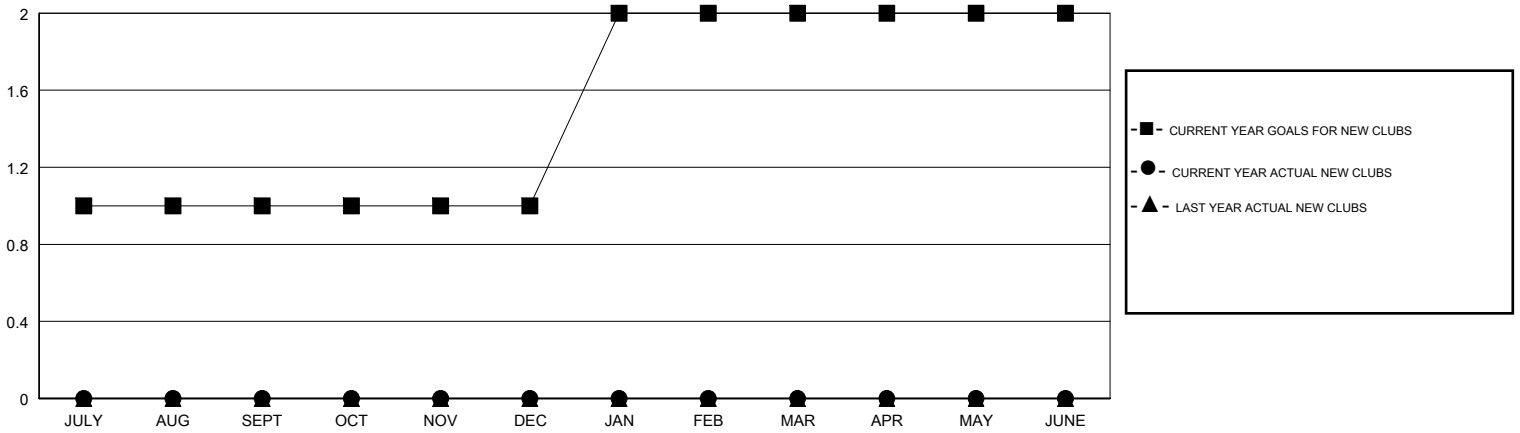
LOCATION ONTARIO

GMT CA

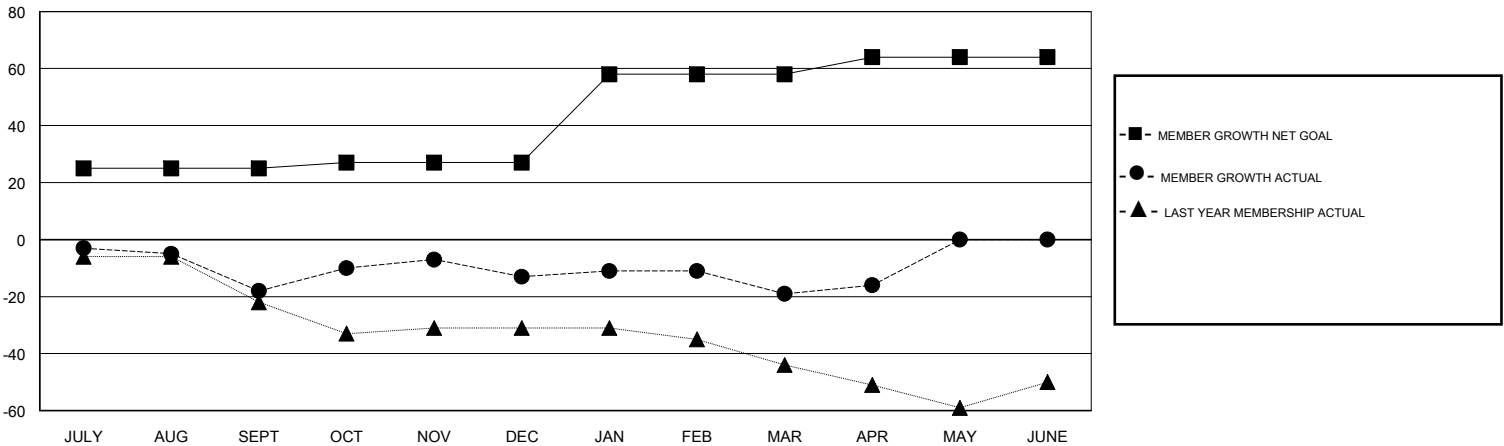
Clubs			
RESULTS FOR 2018-2019			
QUARTER	NEW CLUB GOAL	NEW CLUBS	DROPPED CLUBS
JULY/AUG/SEPT	1	0	0
OCT/NOV/DEC	0	0	0
JAN/FEB/MAR	1	0	0
APR/MAY/JUNE	0	0	0

Members			
RESULTS FOR 2018-2019			
QUARTER	MEMBER GROWTH NET GOAL	MEMBER GROWTH ACTUAL	DROPPED MEMBERS ACTUAL (including transfers)
JULY/AUG/SEPT	25	19	33
OCT/NOV/DEC	2	60	46
JAN/FEB/MAR	31	23	25
APR/MAY/JUNE	6	11	7

GOALS AND ACTUAL NEW CLUBS CUMULATIVE



GOALS AND ACTUAL MEMBERS CUMULATIVE



DROPPED CLUBS: 0

32 CLUBS OF 53 ADDED 1 OR MORE NEW MEMBERS

GENDER DISTRIBUTION	
MALE	695 (56.97%)
FEMALE	525 (43.03%)
Women Percentage Fiscal Year Goal: 48%	

DROPPED MEMBERS	
DECEASED	15
CLUB CANCELLED	0
OTHER	96
TOTAL	111

[CLICK HERE FOR CUMULATIVE MEMBERSHIP DATA](#)

TOTAL FAMILY UNIT MEMBERS	223
FAMILY MEMBERS PAYING HALF DUES	113